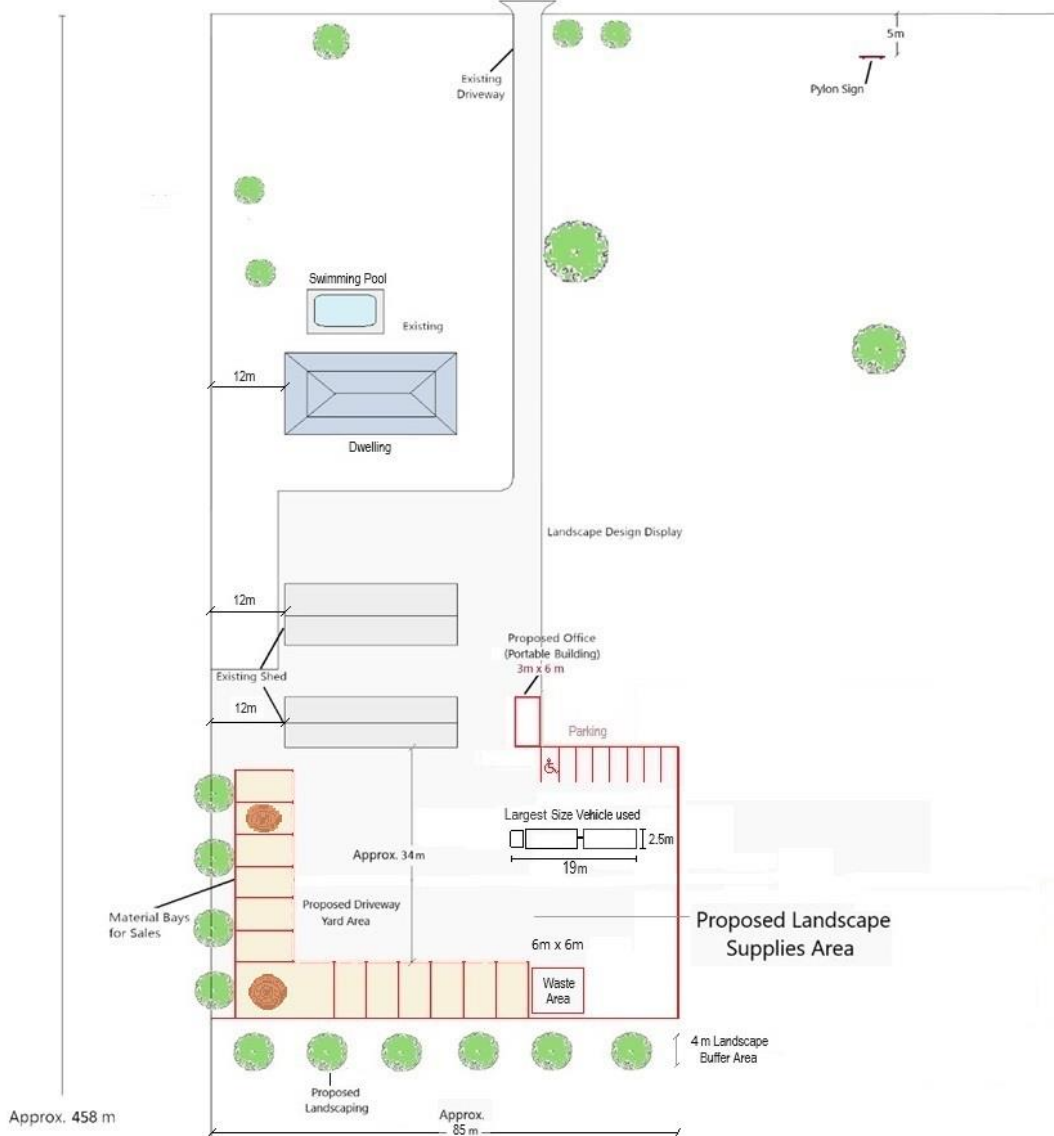


BURGMANN'S LANE



Tree Species Type - *Fraxinus griffithii* (Evergreen Ash) or similar species

Mature Size - 6-8 x 4m

Foliage - Evergreen

Form - Oval

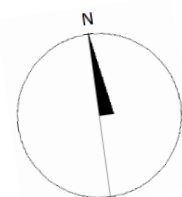
Characteristics - Fast growing, drought and frost tolerant, attractive tree has leaves that are green and shiny on the top and hairy silver coloured underneath. They are oval shaped with pointy tips. The flowers appear in panicles, are white and borne in Spring. Often used as a feature tree in parks and gardens, for street trees and for screening purposes.

Position & Soil - Tolerates a wide range of conditions but performs best in moist, well drained soils with full sun. Requires little maintenance after established.

Maturity Height at Planting - 1.5 metres.

Existing

Proposed



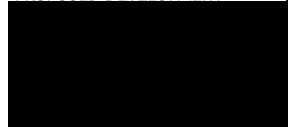
THIS DRAWING IS NOT TO SCALE

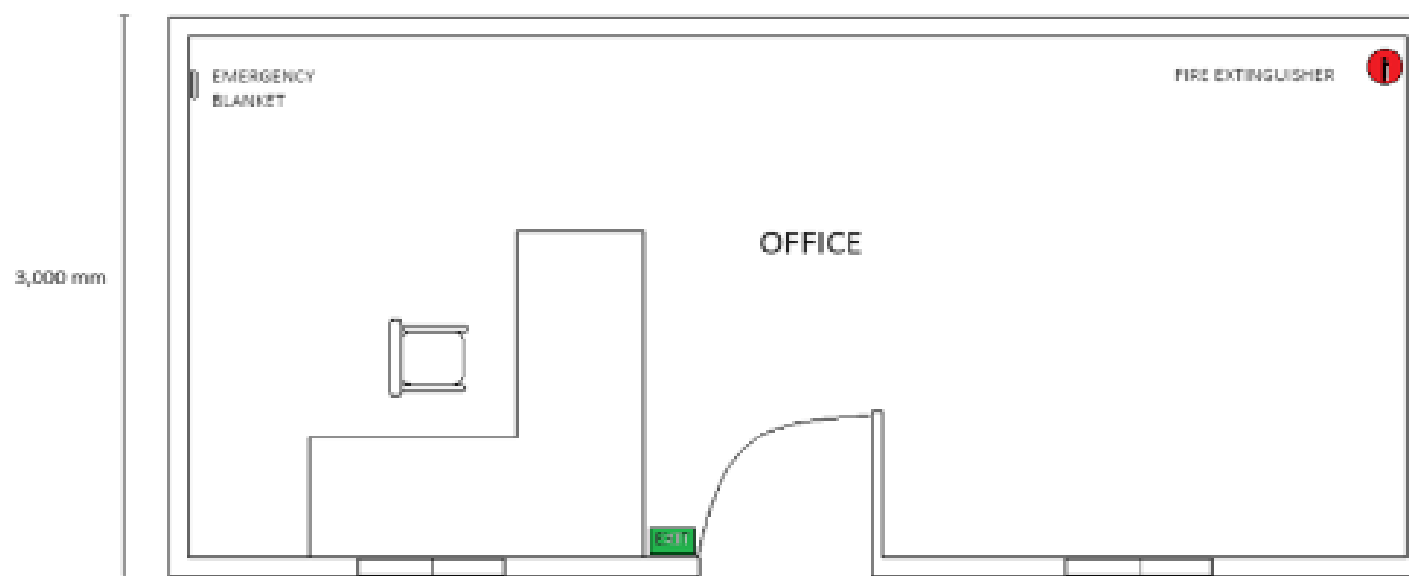
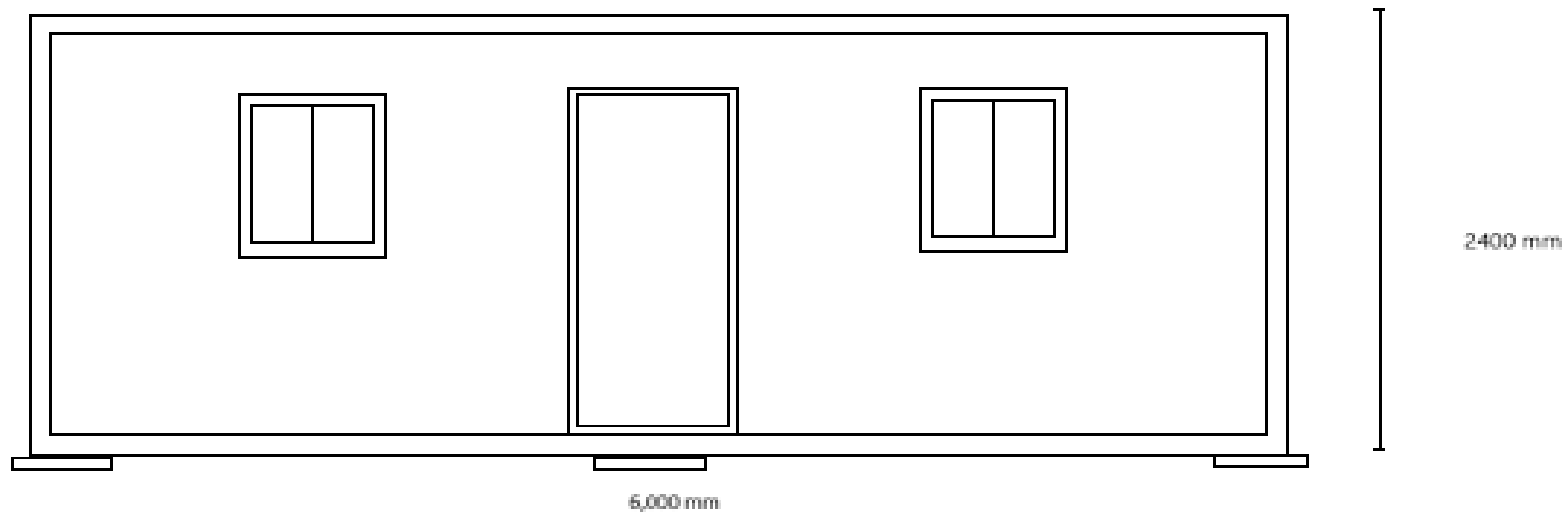
NOTES:

DO NOT SCALE FROM THIS DRAWING - USE FIGURED DIMENSIONS ONLY

REV	DATE	TITLE
1	28-5-24	SITE PLAN
2	9-9-24	SITE AND LANDSCAPING PLAN

PROPOSED DEVELOPMENT







Proposed Pylon Signage Dimensions: 2500 mm Long x 1500 Wide x 2500 High (2 Signs in triangular display)

Colour Scheme: Neutral Colours consisting of Black, Light Grey and Red



Photomontage of Proposed Signage to be located on Subject Land